



**MI**

Order of Malta  
Worldwide Relief



Malteser International  
**Program Africa**

# Content

## 2–25 MI Africa Program

- 2–3 Our Mission, Our Vision
- 4–5 MI in Africa
- 6–7 Who We Work With
- 8–9 What We Do
- 10–11 **DR Congo:** Strengthening Health Systems
- 12–13 **Kenya, Ethiopia:** Establishing a One Health Approach
- 14–15 **East Africa:** Improving Emergency Medical Services
- 16–17 **Nigeria:** Enabling Safety and Security
- 18–19 **South Sudan:** Securing FNS and Supporting Livelihoods
- 20–21 **Uganda:** Environmental Protection and Climate Change Mitigation
- 22–23 **Regional:** Emergency Support
- 24–25 **Global:** WASH Program

## 26–33 About MI

- 26–27 How We Work
- 28–29 People Centeredness and Partner Approach
- 31 Local Partners
- 33 Thank You



Dear friends and partners  
of Malteser International,

Poverty, hunger, natural disasters, epidemics, flight, and displacement – the challenges that many people in the countries of Sub-Saharan Africa must contend with are complex and numerous. Africa is by nature a continent rich in natural and agile human resources as well as multiple opportunities for future economic development.

At Malteser International (MI), we want to play our part in meeting these challenges, and use the opportunities to enable the people in our project countries to live a life of health and dignity.

This publication shows a selection of our effort in the Africa region. Our work is only possible thanks to our strong international networks and even more important thanks to our local and national partners. We are deeply grateful and extend our heartfelt appreciation for your incredible support!

Yours sincerely,  
Roland Hansen  
Head of Regional Group Africa



© Nyokabi Kahura/ Malteser International

# VISION

We aspire to a world where all individuals – particularly those in need and those who are displaced – live a life of health and dignity.

# MISSION STATEMENT

We improve the health and well-being of suffering and displaced people in crises around the world. In this way, we especially fulfill the mission of the Sovereign Order of Malta to “serve the poor and the sick”. We provide our support regardless of gender, political belief, origin, or faith.

We deploy our experts in crisis situations, conflict-ridden areas, during natural disasters and epidemics around the world. We intervene to provide medical and mental health support, clean water, sanitation and hygiene (WASH), food, protection, and shelter where possible. We take a holistic approach to health in our programming, which includes the protection of nature. We work with local resources and engage local partners, as well as the Order of Malta's global network, to provide rapid and effective responses in even the most remote locations.

People are at the center of our assistance. Our goal is to sustainably increase the resilience of those affected the most by disasters. We are also committed to contributing to the achievement of the UN Sustainable Develop-

ment Goals. In doing so, we extend our support to all individuals in need regardless of gender, political belief, origin, or faith.

Christian values and the humanitarian principles of humanity, neutrality, impartiality, and independence are the foundation of our work. We are committed to the highest levels of innovation, professionalism, quality, and transparency. Driven by our values, and thanks to our over 65 years of experience, we remain a trustworthy organization for our donors, partners and most importantly, for the people we serve. Through our work we experience joy, find greater meaning, and a sense of belonging among like-minded individuals.

# MI IN AFRICA

MI has been continuously present in Africa since its 1994 response to the Rwandan Genocide. In those days, Malteser started relief and health operations around the Great Lakes region and Sudan. In 2022, MI worked on 49 projects in Africa, reaching 2.1 people in need across 9 countries with a volume of € 25.5 million.

To support the country teams MI maintains a Regional Support Office in Kampala, Uganda, and regional advisors for the core sectors health, WASH and food & nutrition security and for emergencies.

Within its core countries – namely the Central African Republic, the DR Congo, Kenya, Nigeria, South Sudan and Uganda – MI operates its own country, program and field offices with both international and national staff. In Burundi, Cameroon, and Ethiopia, MI works exclusively through partner organizations.

## Africa and its past, current, and future MI presence



# WHO WE WORK WITH

MI adopts a balanced approach to implementation, including self-implementation and implementation jointly with or entirely through longstanding local or national partners. The partners are governmental, church based, national or local non-governmental organizations, as well as from the private sector.

MI actively promotes localization and strives to enhance partner implementation in Africa. Furthermore, MI is piloting program-based project funding (multi-year funding, flexibility in programming) with selected longstanding partners to improve their funding and planning options.



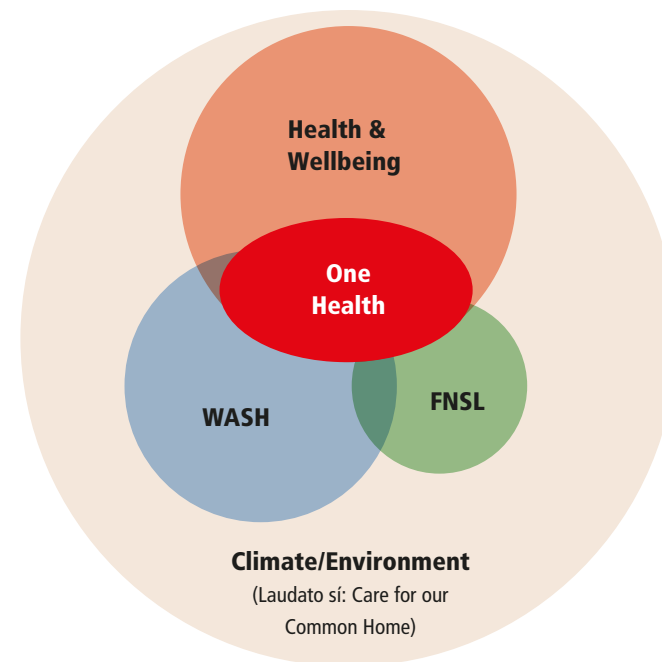
© Malteser International

# WHAT WE DO

Our program focuses on four main sectors: Health & Wellbeing, Water, Sanitation and Hygiene (WASH), Food & Nutrition Security/Livelihood (FNSL), and Climate/Environment. We contribute thus to the fulfillment of basic human rights. For each sector, social cohesion and do-no-harm as well as protection activities are integrated as cross-cutting elements.

## Enhancing health and well-being

MI programs contribute to a reduction in morbidity and mortality and improved physical, mental and social well-being. The target population has access to preventive and curative healthcare and epidemic preparedness. We prevent the outbreak of infectious diseases and improve our response by thinking about human, animal and environmental health together (One Health).



## Experts in delivering Water, Sanitation and Hygiene (WASH) Services

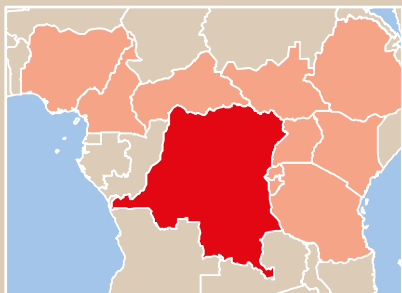
MI contributes to a reduction of WASH related diseases. The target population has safe and inclusive access to water and sanitation facilities and protects itself against diseases related to poor personal and community hygiene practices.

## Strong partners in securing Food Nutrition Security/ Livelihood (FNSL)

MI works towards improving the equitable access to sufficient and nutritious food. The target population has access to sufficient nutritious food and stable livelihoods.

## Passionate about protecting our common home

MI programs contribute to environmental protection and climate change adaptation and mitigation in development and humanitarian contexts. We also try to reduce our own ecological footprint and compensate for carbon emissions from international flights.



## DR Congo

### Strengthening Health Systems

For more than 20 years, MI has been working to strengthen the public health system in the DR Congo.

- Currently, 405 health centers and 21 hospitals in 21 health zones receive financial as well as technical support to ensure that patients have access to high-quality affordable health care.
- Since 2016, MI is supporting health facilities, villages, schools and public institutions in the DR Congo in epidemic preparedness and response for epidemics like Ebola, cholera, plague, monkey pox, rabies, yellow fever, West Nile fever and meningitis.
- MI's work improved the health situation of around 4.1 million people in the provinces of Ituri, Haut-Uélé, Bas-Uélé and Kasai Central.

In DR Congo, the concept of the Humanitarian-Development-Peace Nexus (HDP-Nexus) is at the core of our work. Social cohesion activities are present in almost all MI implementations of emergency as well as the development context.

Furthermore, community participation is ensured by participatory approaches, such as the People First Impact Method (P-FIM).

Learn more about our projects in the DR Congo:



© Nyokabi Kahura/Malteser International

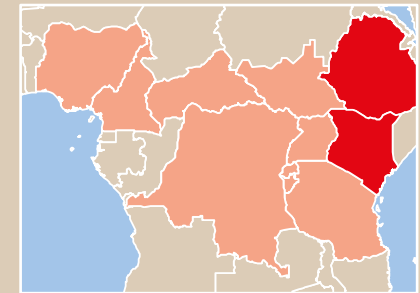


© Malteser International

## Kenya/Ethiopia

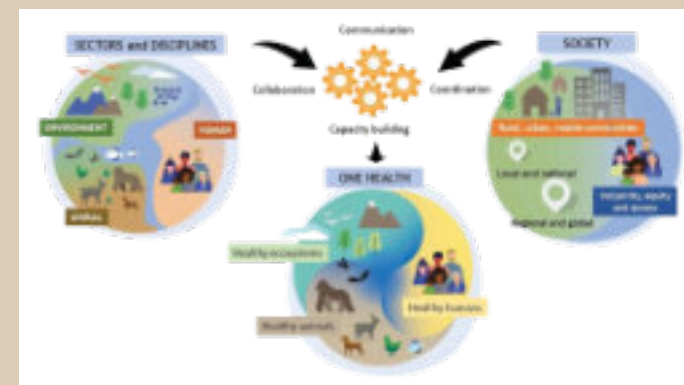
### Establishing a One Health Approach

In northern Kenya and southern Ethiopia, MI is implementing a cross-border One Health project to reduce the spread of zoonotic diseases in arid and semi-arid lands and thus improve the resilience of people. Components include:



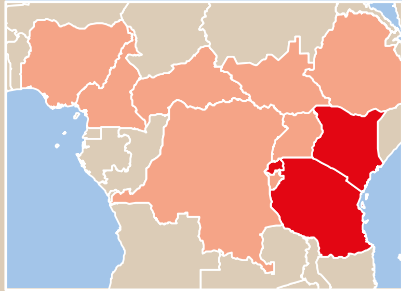
- Training and education of One Health related staff from local authorities and partners, as well as system strengthening since One Health is a fairly new concept.
- Improving food security through adapted farming practices and training on diversified diets.
- Conducting mobile health services – both animal and human – to improve overall health care, including vaccination campaigns.
- Collaboration with research institutions on One Health.

Learn more about our projects in Kenya and Ethiopia:



The One Health approach as designed by the One Health High Level Expert Panel (OHHLEP).





## East Africa

### Improving Emergency Medical Services

In 2017, MI began reinforcing the national emergency medical service (EMS) system and emergency rooms at hospitals in Uganda. This effort expanded to include Kenya since 2020, a further expansion will be Rwanda by 2024.

In the first phase of the program the legal framework was created, and generally binding standards were promoted in Uganda in November 2021. In the second phase further steps include:

- Closing gaps in the legal framework, in close coordination with stakeholders in the emergency medical services system.
- Expanding the already standardized guidelines to additional districts and regions.
- Extending training opportunities and courses in local academic institutions.
- In both Uganda and Kenya, operational call and dispatch centers are being established, standards for their operation are being defined, and the staff trained accordingly.

Through close coordination and co-operation with the ministries of health, professional associations and training institutions, initial successes have already been achieved and structures consolidated that will strengthen the emergency system in the long term.

Learn more about our projects in East Africa:



© Nyokabi Kahura/Malteser International



© Emily Kinsky/Malteser International

## Nigeria

### Access to WASH and Protection

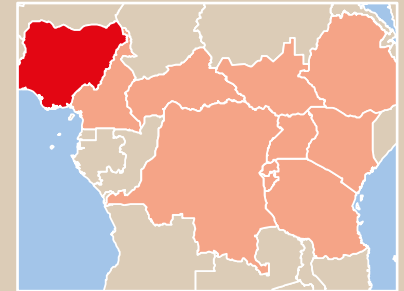
The ongoing conflict in northeastern Nigeria triggered by Islamist terrorism has forced many people to leave their homes and seek refuge in camps secured by the military that are hopelessly overpopulated.

Both during and after their displacement, many girls and women experience sexual violence and other forms of gender-based violence, such as forced or child marriage.

MI has been working in Nigeria since 2017 and helps to improve living conditions in the camps and host communities, with the provision of comprehensive WASH facilities, as well as support those affected by gender-based violence by offering:

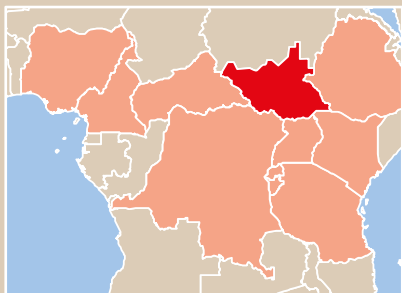
- Psychosocial support for survivors of gender-based violence.
- Trainings and kick-off grants for income generating activities, so that persons impacted by violence can take control of their lives and build a better future.
- Operational support of safe spaces for women and girls.

In collaboration with a partner organization, MI also improves the water supply and access to sanitation facilities as well as hygiene materials and protection for refugees from Cameroon and host communities in southeastern Nigeria.



Learn more about our projects in Nigeria:





## South Sudan

### Securing Food Nutrition Security and Supporting Livelihoods

MI has been working in what is today's geographic area of South Sudan since 1996.

The ongoing civil war has led to the displacement of millions of people. To avoid further deterioration of the humanitarian situation, we are providing livelihood support and improving food security:

- Provision of crop and vegetable seeds, agricultural tools, and fishing kits for vulnerable households.
- Training in good and nutrition sensitive agricultural practices including the efficient cultivation of staple foods and local vegetables as well as the efficient use of tools and machinery.
- Access to water through rehabilitation of boreholes and shallow wells and distribution of solarized irrigation pumps for all-season farming.
- Community mobilization and sensitization via coordination with local leaders and authorities.
- Construction and allocation of areas for seedbeds and model gardens.
- School meals and the establishment of school gardens.
- Supporting the development of local markets, establishing saving groups for increased financial access and vocational training for income generating activities.

Learn more about our work in South Sudan:



© Nyokabi Kahura/Malteser International

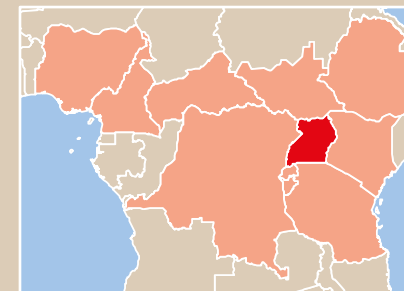


Construction work with rice straw panels(Uganda)  
© IBSF/Malteser International

## Uganda

### Environment Protection and Climate Change Mitigation

In 2014 Uganda welcomed over 1 million refugees into the country and since then is Africa's biggest safe place for refugees. From the start of this crisis, MI has provided support to refugees and host communities in West Nile, already focusing on the sustainability and environment effect of its interventions.



The country's poorest communities are being hit hardest by the impacts of climate change and the effects of deforestation. To restore tree cover and help create sustainable livelihood opportunities, we promote environmental conservation initiatives and climate change mitigation in Uganda by:

- Reforestation of 115 hectares of forest since 2020.
- Distribution of 52,146 assorted fast-growing and nutritious fruit seedlings.
- Up to 300 small holder farmers reached and trained on modern sustainable methods of soil management and afforestation.
- Establishing and training youth groups, who set up successful tree nurseries.
- Promoting the use of sustainable energy solutions, such as energy saving stoves in schools and at household level.
- Promoting and deploying zero-carbon construction materials made of straw waste.
- Promoting and using solarization for water pumps and our offices.
- Strengthening local capacities to make a sustainable contribution to conserving and protecting natural resources in northern Uganda.

Learn more about our work in Uganda:



## Regional

### Emergency Preparedness and Response

Climate change has contributed to an increase in the frequency and severity of extreme weather events. The drought in the Horn of Africa, that started in 2021, has affected more than 20 million people – and its impact still does. In general, floods are becoming more frequent and intense, already affecting not only large parts of Nigeria and South Sudan, but in recent years Burundi, the CAR, the DRC, Kenya and Uganda as well. Global weather phenomena like El Niño are expected to further increase these floods.

Getting ahead of crises has always been a challenge for humanitarians. Utilizing local knowledge and access to people affected by crises, MI staff together with its partners has worked to respond quickly and ahead of crises, wherever and whenever possible. To be prepared, MI established a regional emergency response capacity to respond to weather related disasters and epidemics like Ebola or Cholera.

As a working definition, MI therefore understands Anticipatory Humanitarian Action as any measure taken to act ahead of a hazard to prevent or reduce the potential humanitarian impact before it fully unfolds. This includes the development and activation of a mechanism that triggers an early action based on official forecasting data and/or expert predictions.



The emergency response team at the isolation unit for the treatment of Ebola cases.  
© Malteser International



Learn more about our global WASH program.  
© Malaika Media/Malteser International

## Global

### WASH Program

Through its ongoing Global WASH program, MI is expanding its focus on promoting the human right to access safely managed water and sanitation.

Approaches such as Making Rights Real (MMR) and WASH Systems Strengthening are at the center of our cross-regional WASH Program in India, Nepal, and Uganda. In the participating countries, MI focuses on:

- Strengthening local government authorities: by building their capacity, promoting better WASH delivery methods, and sharing knowledge.
- Boosting Civil Society Organizations (CSOs): via advocacy and by raising awareness, building capacity, learning, coordination, and exchanging information.
- Empowering Communities: by raising awareness, sharing information, networking, and developing their capacities.
- Enhancing Knowledge and Collaboration: by sharing information at the national and international level, raising awareness and advocacy, and capacity building.

Learn more about our global wash program:

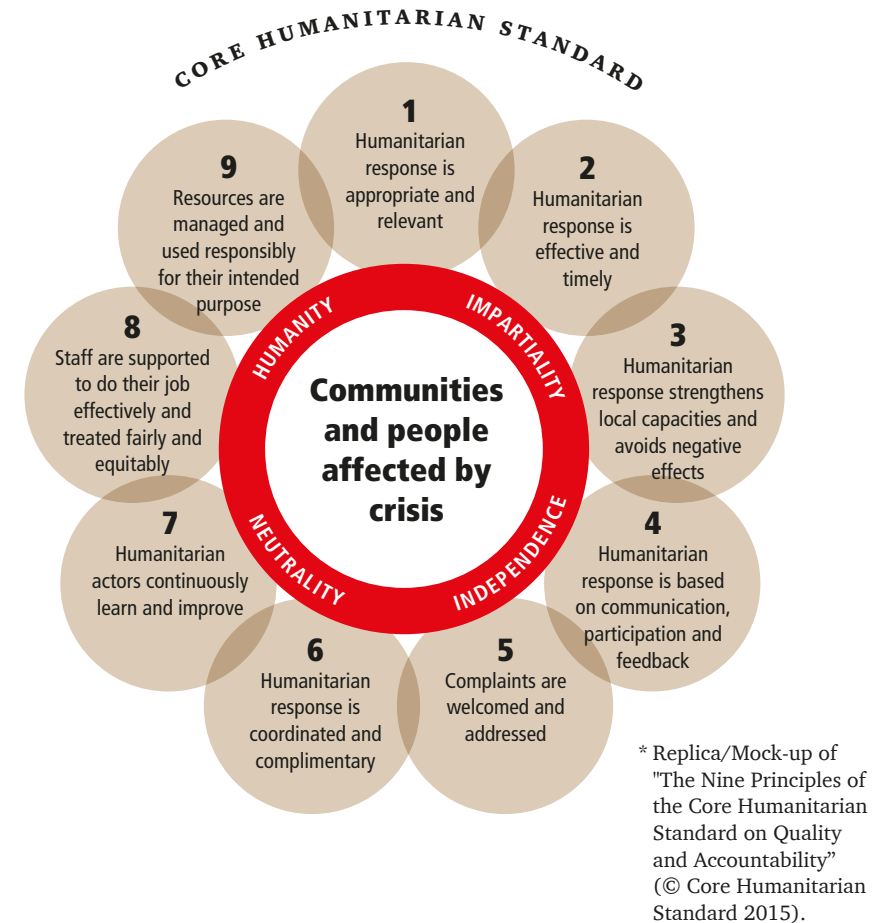


# HOW WE WORK

As well as making sure that our work adheres to minimum quality standards, we constantly seek to improve quality wherever and whenever we can.

To do so, we are committed to the following national and international Codes and Standards of practice:

- Core Humanitarian Standard on Quality and Accountability (see overleaf)
- The Code of Conduct: Principles of Conduct for the International Red Cross and Red Crescent Movement and NGOs in Disaster Response Programs
- The Sphere Project: Humanitarian Charter and Minimum Standards in Disaster Response
- The Social and Moral Teaching of the Roman Catholic Church: Approach to bioethics developed with the National Catholic Bioethics Center (NCBC) of Philadelphia, (USA), to defend the dignity of the human person
- The VENRO transparency, leadership and accounting code of conduct
- The twelve basic rules of humanitarian aid, as agreed by the the German Federal Foreign Office's Humanitarian Aid Coordinating Committee



## Quality Control

We undertake regular quality control measures in order to maintain the high standards that we are committed to in our work. These include a robust financial controlling system and an internal auditing that supervises all of our activities both at home and abroad.

## People Centeredness and Partner Approach

Putting people and communities first is one of MI's goals. Therefore, MI intends to give participatory approaches even more room and include P-FIM in its work whenever possible.

MI's long-term engagement in core countries resulted in fostering strong relationships with local communities, benefiting from expertise of local partners, and building a good reputation among local partners. The partners generally appreciate the collaboration with MI and their participation in project design and cost planning.

By working with partners and within their structures, such as in health centers and hospitals, the creation of parallel structures is avoided – especially in emergencies.

By means of continual support, learning, exchange and capacity building, partner organizations and MI's capacities are strengthened. Furthermore, involving partners enables a systematic and successful transition after the emergency phase. Finally, partners are a key asset in preparedness and for advocacy within their own countries.

As a founding member of the RefACTION initiative, "beyond aid" modalities are discussed, and a more people-centered and collaborative approach will be used. Cash and voucher assistance (CVA) are also a step forward in empowering people from voices to choices.

MI tries to use CVA whenever possible or suitable, and also applies digital tools for a smoother implementation. MI looks at other market-based approaches that strengthen the self-help capacities of societies and their local economies as well.



Emergency aid distribution by our partner organization PACIDA in Kenya. © Malteser International





© Malteser International

## Partners

- Association of Ambulance Professionals Uganda
- Amref Health Africa
- Centrale d'Achat et d'Approvisionnement en Médicaments Essentiels du Nord-Ituri et du Haut-Uélé
- Care and Assistance for Forced Migrants
- Caritas Bamenda
- Catholic University of South Sudan, Campus Wau
- Christoffel-Blindenmission
- Centre pour Handicapés Physiques „Shirika la Umoja“
- Department of Public Utilities South Sudan
- Emergency Medicine Kenya Foundation
- Etablissement d'Utilité Publique – Fonds d'Achat de Services de Santé
- Fondation Stamm
- Fracarita D.R. Congo
- Gejja Women Foundation
- German Toilet Organization
- Health authorities, health centers and general referral hospitals in the Provincial Health Divisions of Ituri, Haut Uélé, Bas Uélé, Kasai Central
- HORIZONT3000
- Impact Building Solutions Foundation
- Integrated Education for Community Empowerment
- International Livestock and Research Institute
- Kenya Council of Emergency Medical Technicians
- Kulika Uganda
- Lubaga Hospital, Uganda
- Mary Help Association
- Mentor Initiative
- Ministry of Agriculture and Forestry South Sudan
- Ministry of Animal Resources and Fisheries South Sudan
- Ministry of Education and Instruction South Sudan
- Ministry of Health and County Health Departments in Kenya
- Ministry of Health, Uganda
- Ministry of Water and Environment Uganda
- Ministry of Water Resources and Irrigation South Sudan
- Nsamizi
- National Union of Women with Disabilities of Uganda
- Pastoralist Community Initiative Development and Assistance
- Rescue Connect Ltd.
- Rhema Care Integrated Development Centre
- Rural Water and Sanitation Authority
- Suubi Lyaffe
- Swiss Tropical and Public Health Institute
- The Victim Relief Alliance
- Uganda Catholic Medical Bureau
- Ugandan Physiotherapist Association
- Viva con Agua Uganda
- WASH United
- Yei Civil Hospital, South Sudan



© Malteser International

# THANK YOU

## for your Support

- Alfred Neven DuMont-Stiftung
- Amref Health Africa/ Global Fund for Malaria, Tuberculosis and HIV/AIDS
- Federal Ministry of Health, Germany
- Federal Ministry for Economic, Germany Cooperation and Development
- CBM: Christoffel-Blindenmission
- European Union
- Else Kröner-Fresenius-Stiftung
- European Commission
- FAO: Food and Agriculture Organization of the United Nations
- GIZ: Deutsche Gesellschaft für Internationale Zusammenarbeit
- Lubaga Hospital
- Mercy Corps
- Merck Family Foundation
- Misereor
- Missio Aachen
- Order of Malta Belgium
- Order of Malta Embassy Nairobi
- Regine Sixt Kinderhilfe
- Trienekens Stiftung
- UN OCHA: Nigeria Humanitarian Fund
- UNICEF



### Publication Information

Malteser International Headquarters Europe  
 Erna-Scheffler-Straße 2  
 51103 Cologne (Germany)  
[info@malteser-international.org](mailto:info@malteser-international.org)  
[www.malteser-international.org](http://www.malteser-international.org)  
 Responsible for Content:  
 Clemens Graf von Mirbach-Harff, Secretary General

Date of Publication: September 2023  
 All Photo Credits: Malteser International  
 Layout/Setting/Editing:  
 Alexander von Lengerke  
 Printed by: Luthe Druck GmbH, Lohmar

Cover Photo  
 © Malteser International

# OUR WORK IS NOT DONE YET!

© Emily Kinsky/Malteser International

**DONATE  
NOW!**

## Follow us on



MalteserInternational



@MalteserInternational



@MalteserInt



MalteserInternational

## Malteser International Donation Account:

Malteser Hilfsdienst e.V.  
Reference: Malteser International  
Account number: 1201200012  
IBAN: DE103 70601201201200012  
S.W.I.F.T./BIC: GENODED1PA7  
(Pax Bank Cologne)

